



Cracking the cancer code

John van Geest Cancer Research Centre





About us

We are a unique purpose-built scientific facility in the East Midlands. Our aim is to save lives and speed recovery by improving the early diagnosis and treatment of cancer.

In 2008, the John and Lucille van Geest Foundation endowed Nottingham Trent University with a research grant of £8 million to establish a dedicated cancer research facility. Nottingham has been a focus of cancer research for over 40 years and our centre cements that legacy.

The opening of our purpose-built premises at NTU's Clifton campus in 2010 allowed us to focus on two key approaches to the treatment of patients with cancer.

- Improving the diagnosis and management of breast and prostate cancers.
- Developing effective vaccines and immunotherapies that will significantly improve the survival rates and quality of life for cancer sufferers.

Our state-of-the-art equipment and facilities enable us to successfully meet the significant challenges of modern day cancer research.

We are making a difference.



What we do

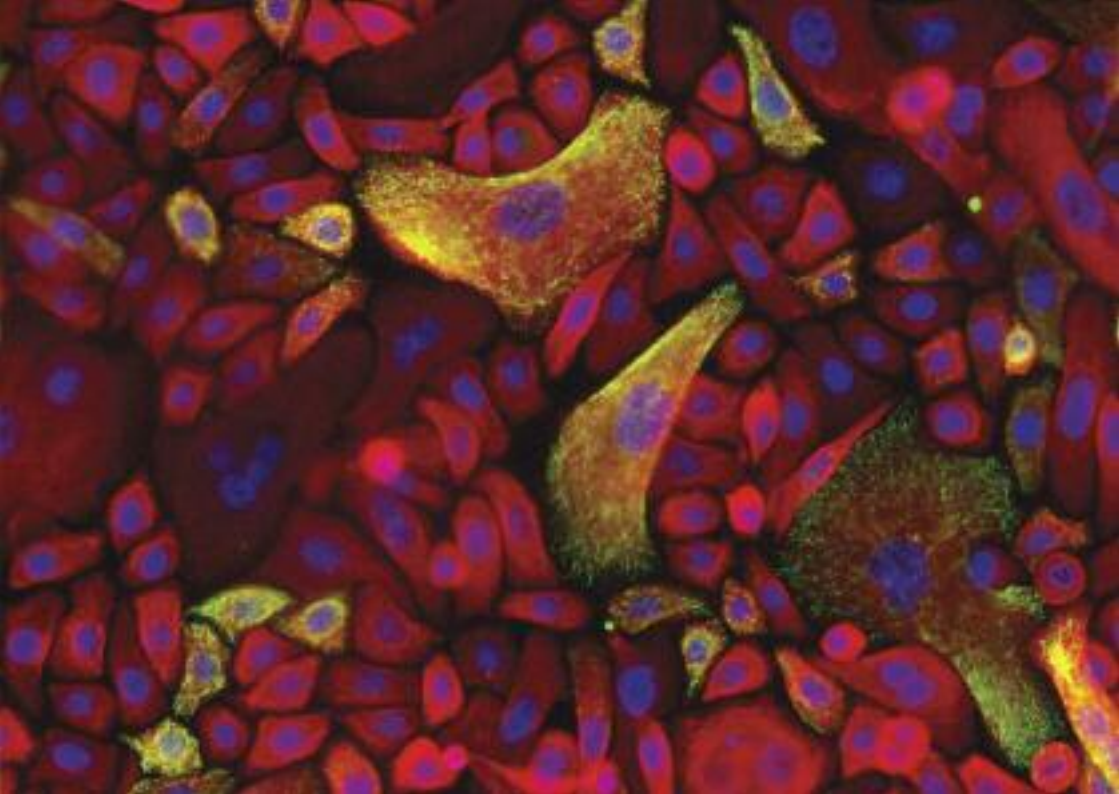
We have a long and established history of cancer research.

We have a world class team of research scientists collaborating across four different disciplines within the centre. They have been chosen for their skills and expertise and will be here for as long as it takes us to crack the cancer code.

We work closely with clinicians and patient groups across the region. We have some impressive international research partnerships with other established cancer research institutions in the USA, Europe, Asia and the Far East.

Our career scientists are using cutting-edge technologies and equipment to:

- discover the genetic basis of the disease and how cancer works.
- develop new methods for diagnosing and personalising treatments for cancer.







Get involved

Please get involved and help us to raise funds for vital life-saving cancer research.

Around one in three people will be diagnosed with some form of cancer during their lifetime. We need your help so we can help others.

You may even change your own life while helping to save the lives of others.

Why not:

- take on a personal challenge?
- participate in our annual runNTU event?
- encourage your friends, family and colleagues to get involved too?



How to give

You can be sure that 100% of the donations we receive go directly towards life-saving cancer research.

Philanthropic gifts, both large and small, allow us to continue with our vital scientific work to improve diagnosis and take vaccines and medicines into clinical trials.

You can make a single donation, set up monthly giving or even leave a legacy in your will.

Spread the word and tell your friends about this amazing facility and what we do. Cancer is personal to all of us, help us to make the difference.

Together we can crack the cancer code.







Contact us

John van Geest Cancer Research Centre

School of Science and Technology

Nottingham Trent University

Clifton Lane

Nottingham

NG11 8NS

Tel: +44 (0) 115 848 6342

Email: vangeest@ntu.ac.uk

www.ntu.ac.uk/vangeest



@vangeestcancer



www.ntu.ac.uk/vangeest

This information can be made available in alternative formats.

© Nottingham Trent University and may not be reproduced or transmitted in any form in whole or in part without the prior written consent of Nottingham Trent University.

6776/03/14